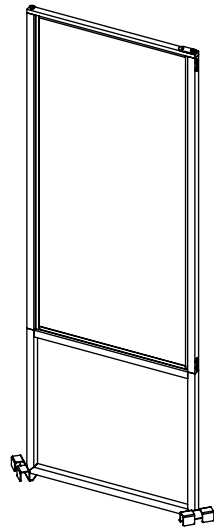
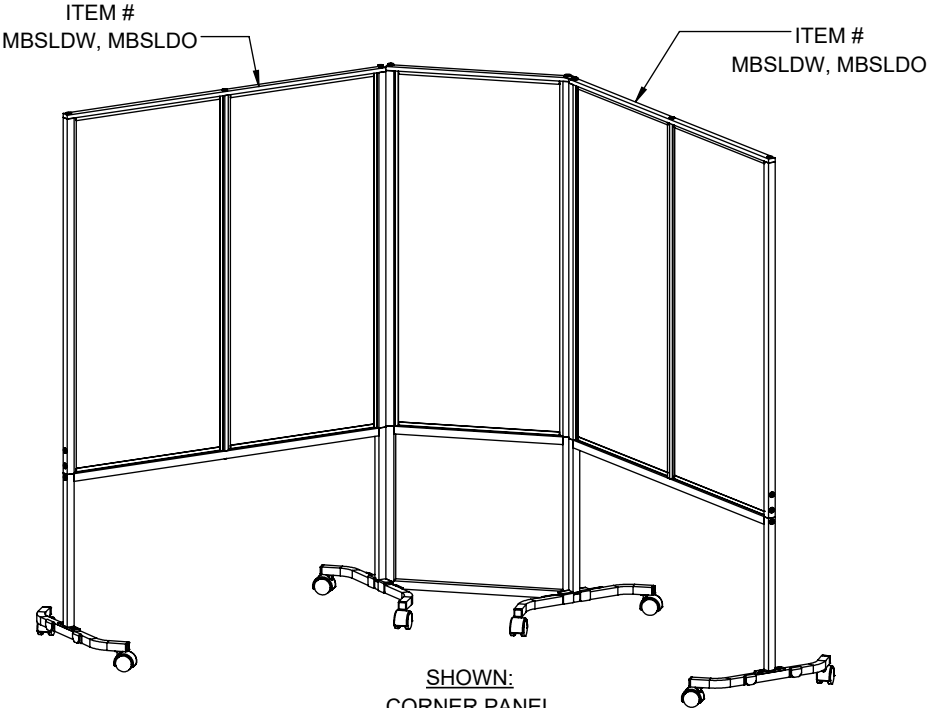


CORNER PANEL FOR MOBILE SHIELDS

Item # MBSLDCRW, MBSLDCRO

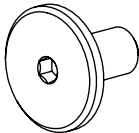


MBSLDW, MBSLDO



SHOWN:
CORNER PANEL
ASSEMBLED WITH
MOBILE SHIELDS

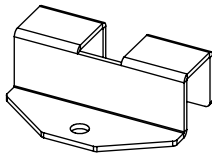
INCLUDED HARDWARE



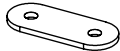
10X
1/4-20 x 0.5" LONG
LOW PROFILE SOCKET
HEAD CAP SCREW



2X
1/4 SPRING LOCK
WASHER



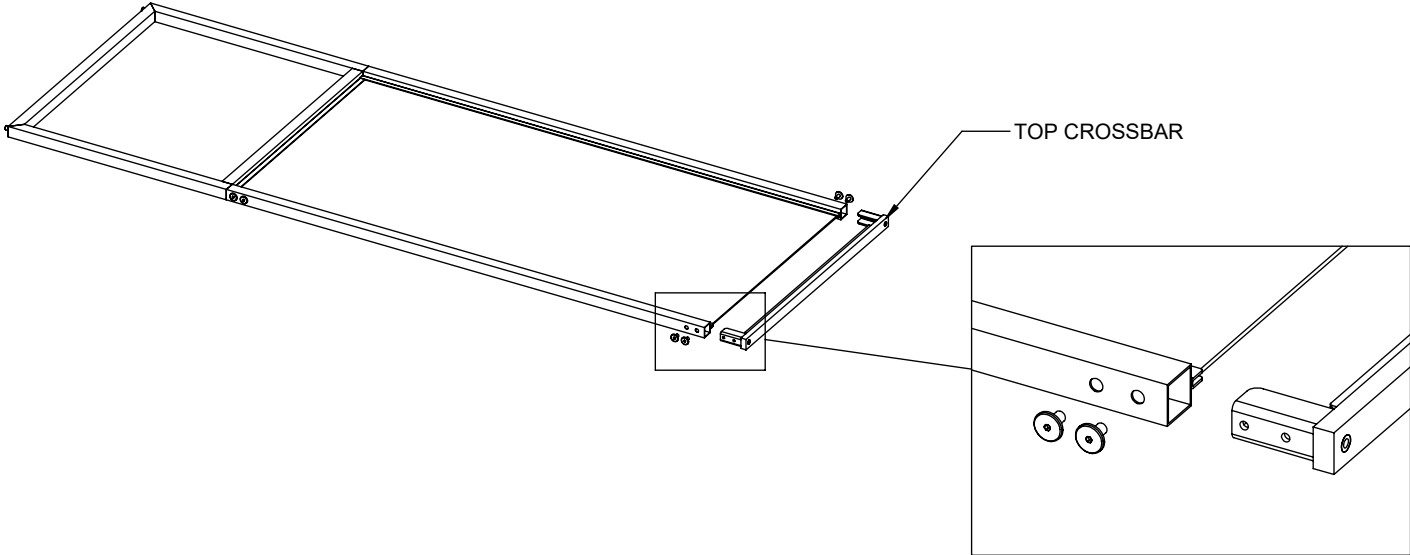
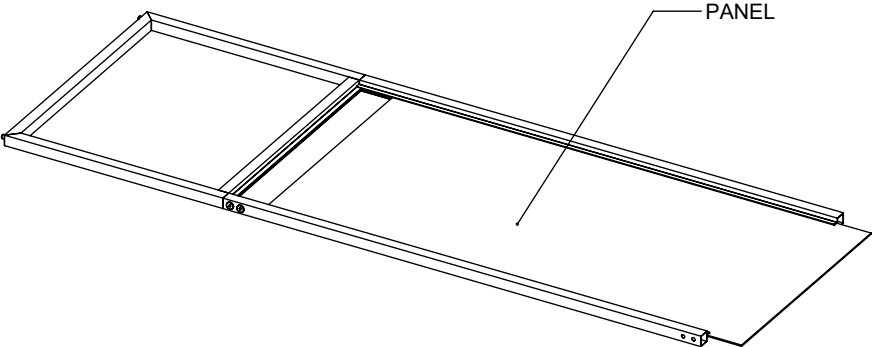
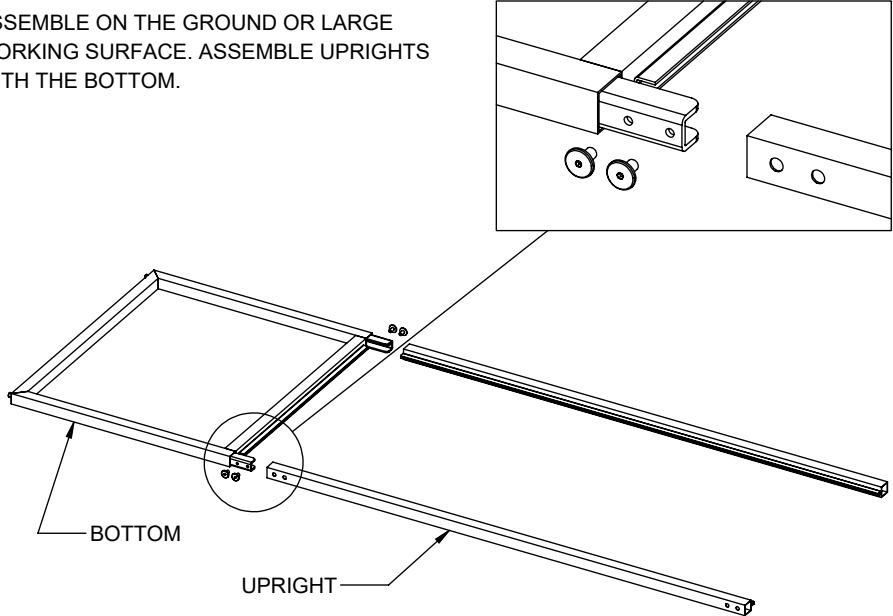
2X
CONNECTING
BRACKET



1X
LINK PLATE

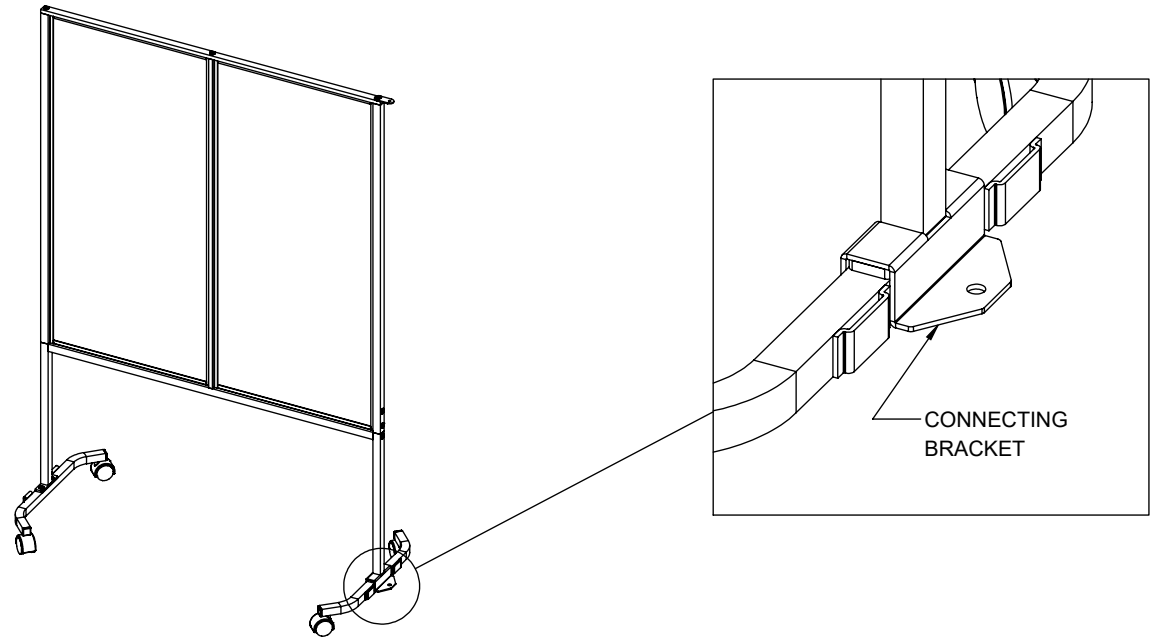
1

ASSEMBLE ON THE GROUND OR LARGE
WORKING SURFACE. ASSEMBLE UPRIGHTS
WITH THE BOTTOM.



4

PLACE CONNECTING BRACKET ON BASE
OF MOBILE SHIELD.



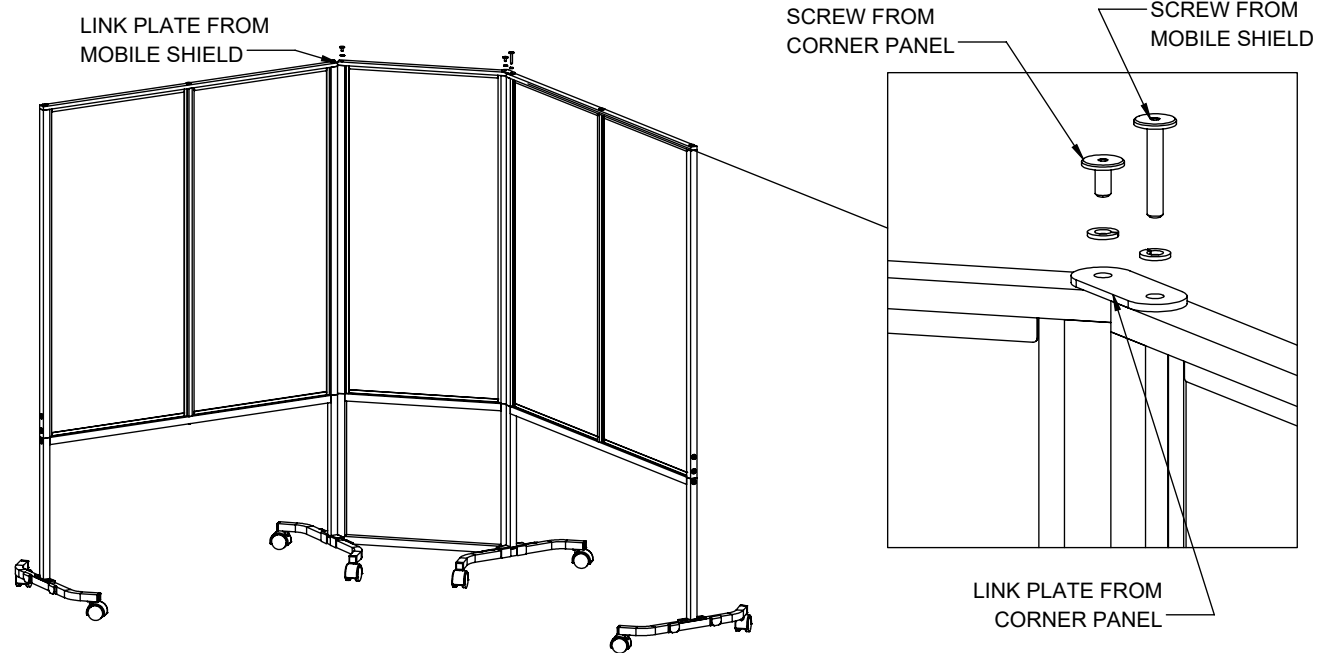
5

LIFT CORNER PANEL ONTO THE BOTTOM
BRACKETS.

MAKE SURE BOTTOM PINS OF CORNER PANEL
GO INTO HOLES ON CONNECTING BRACKET.

ROTATE LINK PLATE FROM MOBILE SHIELD.
SECURE WITH (1) SCREWS AND SPRING LOCK
WASHERS ON TOP CROSSBAR.

ASSEMBLE LINK PLATE FROM CORNER PANEL.



SAMPLE CONFIGURATIONS

MOBILE SHIELDS AND CORNER SHIELDS CAN BE PLACED
IN DIFFERENT CONFIGURATIONS

