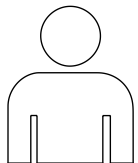
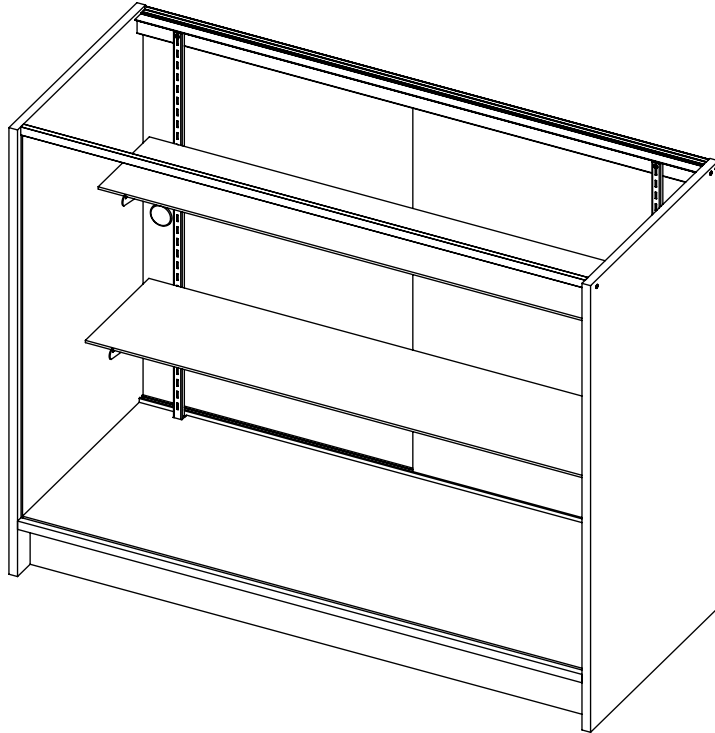


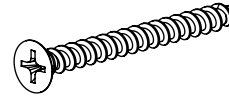
# 48" LONG EXTRA VISION SHOWCASE UNIT

Item # PW-SC482-W,-MP

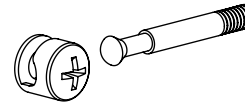


**3 PEOPLE  
REQUIRED  
FOR  
ASSEMBLY**

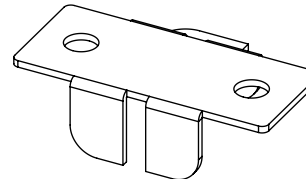
## INCLUDED HARDWARE



**6X**  
#6 X 1.5" LONG  
FLAT HEAD SCREW



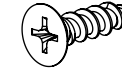
**18X**  
CAM LOCK AND STEM



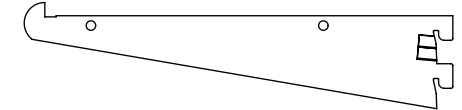
**8X**  
GLKC - SNAP IN SHELF  
CENTER REST



**6X**  
STICKER



**4X**  
#8 X 0.625" LONG  
FLAT HEAD SCREW



**2X** GA8 - 8" BRACKET  
**2X** GA10 - 10" BRACKET



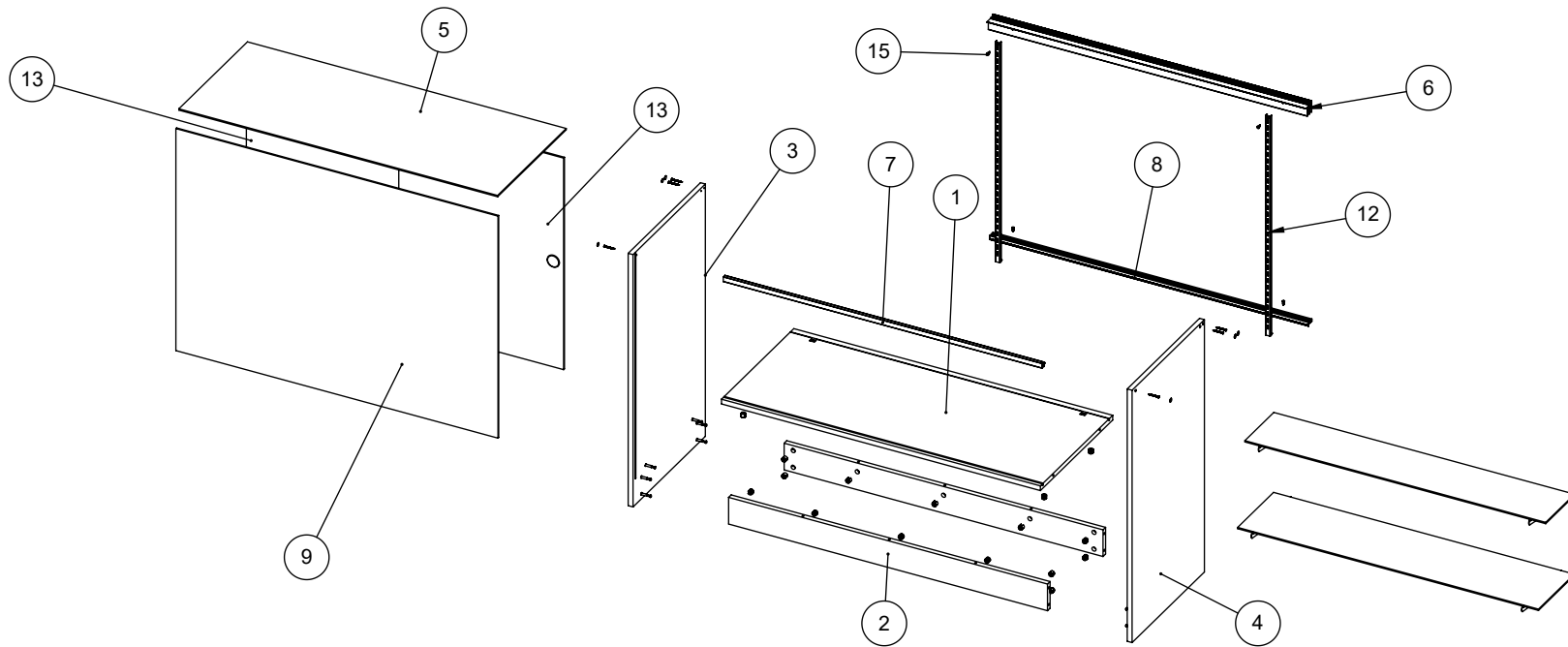
**16X**  
BU - CLEAR RUBBER  
BUMPER

## TOOLS REQUIRED

SCREWDRIVER  
RUBBER Mallet

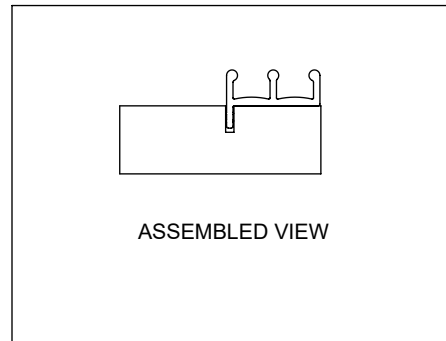
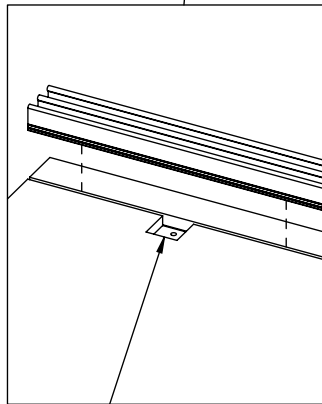
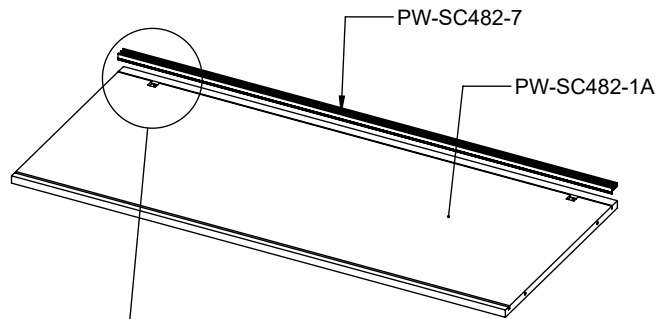
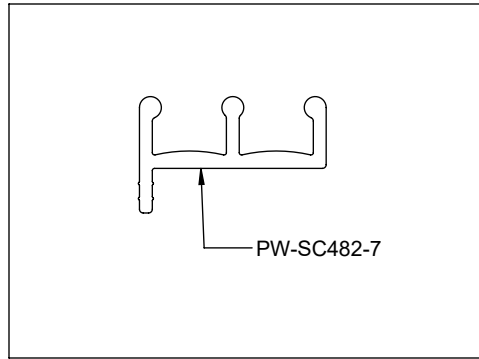
ITEM NO.	PART NUMBER	DESCRIPTION	MATERIAL	QTY.
1	PW-SC482-1A	BASE	MDF	1
2	PW-SC482-1B	TOE KICK	MDF	2
3	PW-SC482-2	SIDE PANEL, LEFT	MDF	1
4	PW-SC482-3	SIDE PANEL, RIGHT	MDF	1
5	PW-SC482-4	GLASS, TOP	GLASS	1
6	PW-SC482-5	EXTRUSION, TOP BACK	ALUMINIUM	1
7	PW-SC482-6	EXTRUSION, TOP FRONT	ALUMINIUM	1
8	PW-SC482-7	EXTRUSION, BOTTOM BACK	ALUMINIUM	1
9	PW-SC482-8	GLASS, FRONT	GLASS	1

ITEM NO.	PART NUMBER	DESCRIPTION	MATERIAL	QTY.
10	PW-SC482-9	GLASS SHELF, 8"	GLASS	1
11	PW-SC482-10	GLASS SHELF, 10"	GLASS	1
12	PW-SC482-11	SLOTTED STANDARD	STEEL	2
13	PW-SC482-12	DOOR	MATERIAL <NOT SPECIFIED>	2
14	#6 FLAT HEAD SCREWS FOR PARTICLEBOARD AND FIBERBOARD	#6 X 1 1/2" LONG FLAT HEAD SCREWS FOR PARTICLEBOARD AND FIBERBOARD	STEEL	6
15	#8 FLAT HEAD SCREW FOR PARTICLEBOARD AND FIBERBOARD	#8 X 5/8" LONG FLAT HEAD WOOD SCREW	STEEL	4
21	STICKER		STEEL	6

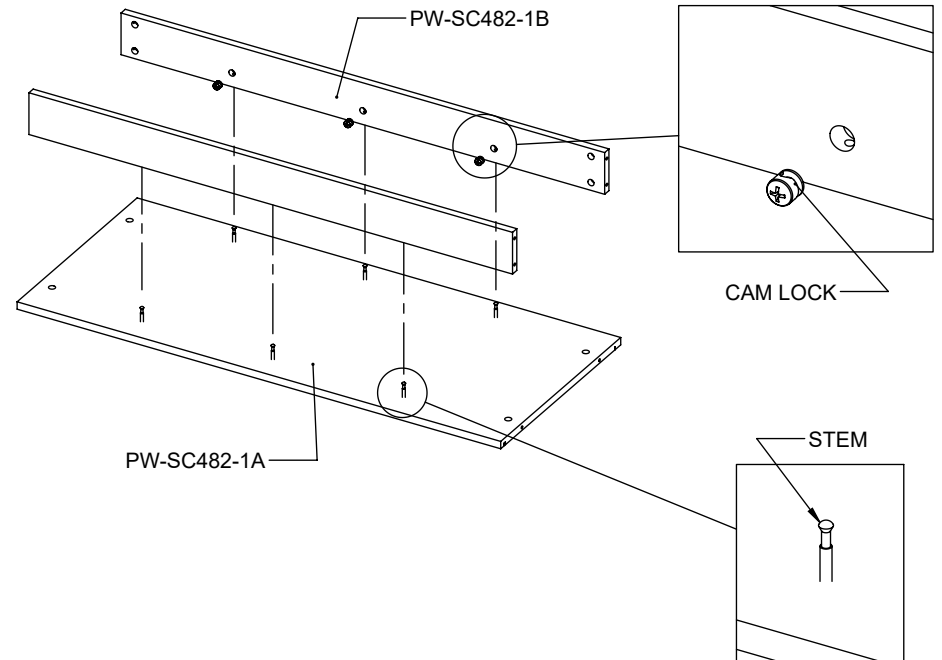
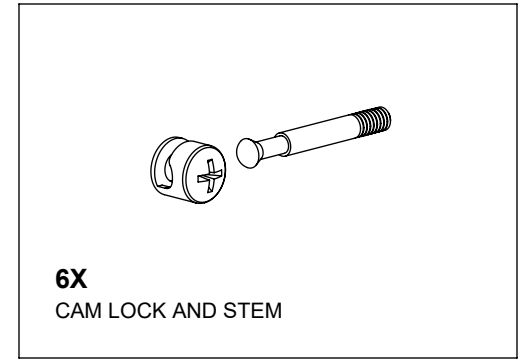


1

-PRESS PART -7 INTO PART -1A.  
-NOTE: MAKE SURE IT GOES  
INTO THE ROUTE ON THE SAME  
SIDE AS THE SQUARE CUTS.



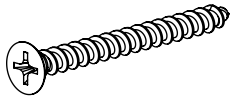
2





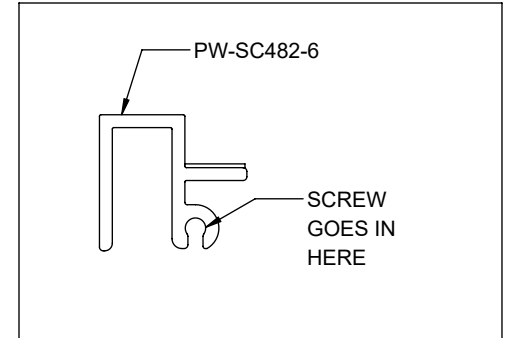
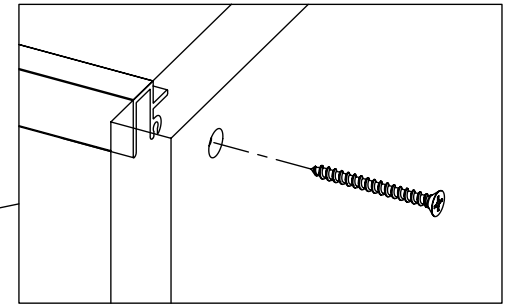
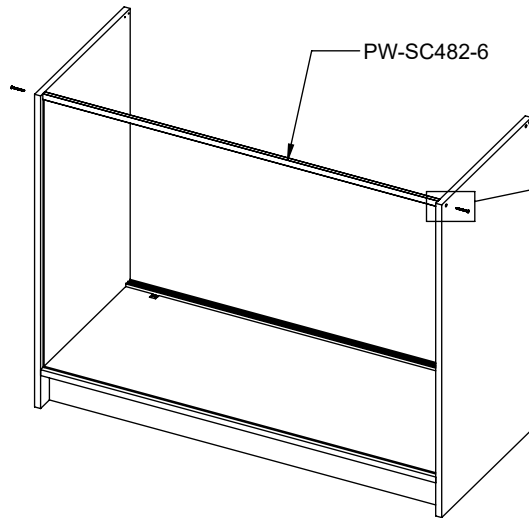
**5**

- CAREFULLY STAND UNIT UPRIGHT.
- PUT -6 ON TOP OF FRONT GLASS.
- SCREW IN FROM THE SIDES.



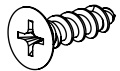
**2X**

#6 X 1.5" LONG  
FLAT HEAD SCREW



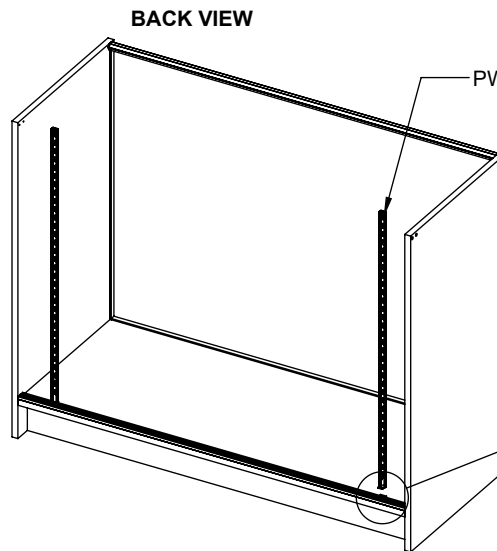
**6**

**NOTE: SQUARE TAB MUST FACE BACKWARDS**

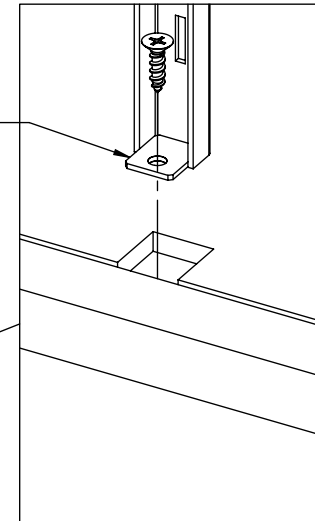


**2X**

#8 X 0.625" LONG  
FLAT HEAD SCREW

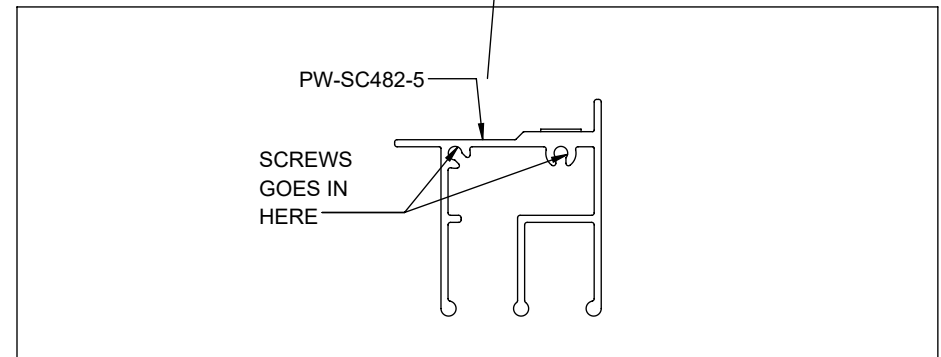
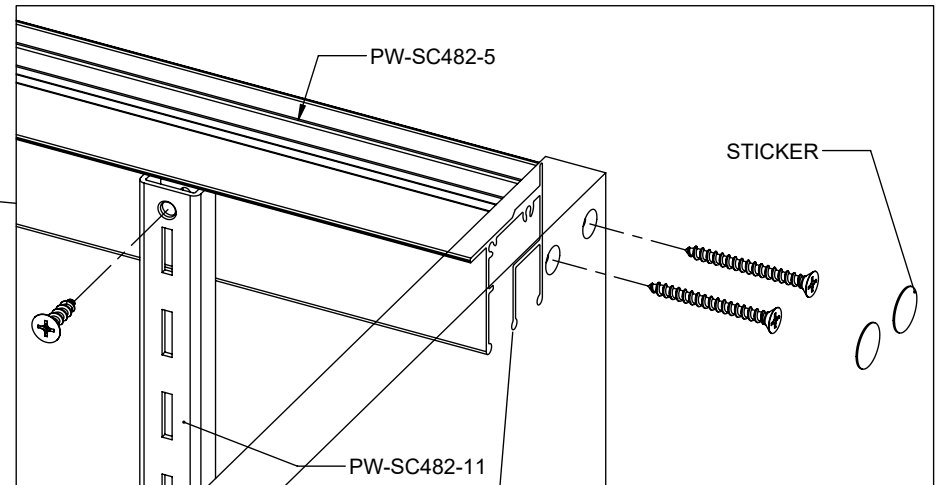
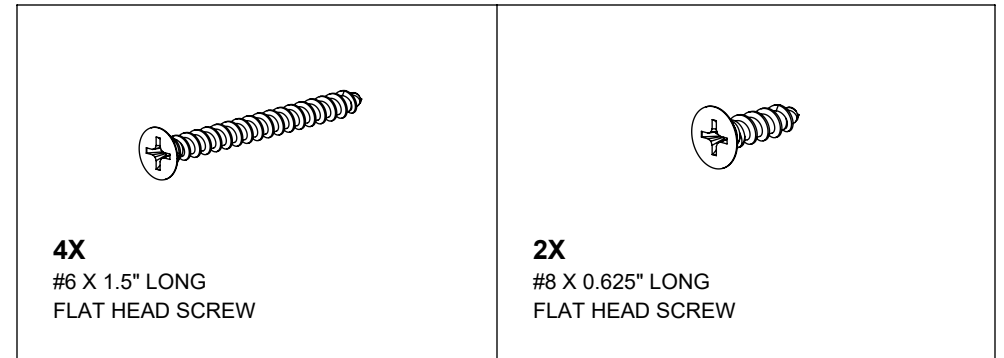
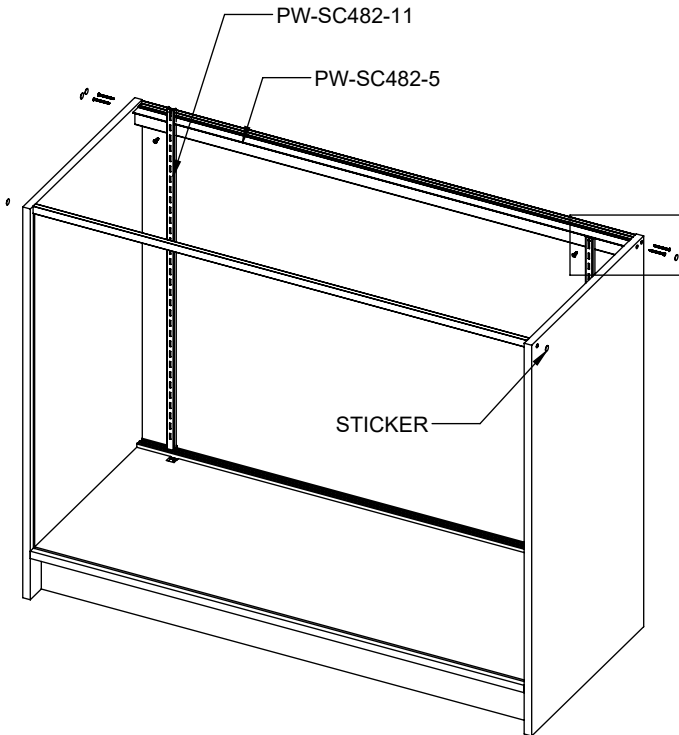


SQUARE TAB



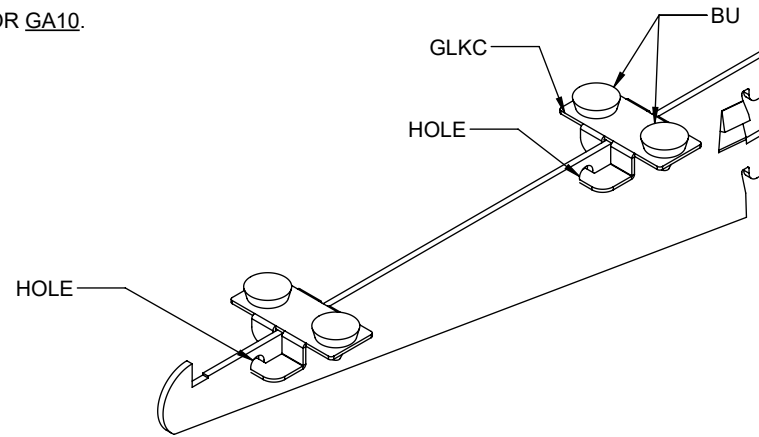
7

- PUT -5 ON TOP OF -11.
- SCREW IN FROM THE SIDES WITH LONG SCREWS.
- SCREW -11 INTO -5 WITH SHORT SCREWS.
- APPLY STICKERS OVER SCREWS ON THE SIDE PANELS.



**8**

- PUSH BU INTO HOLES ON GLKC.
- ROTATE GLKC ONTO SHELF BRACKETS GA8 OR GA10.

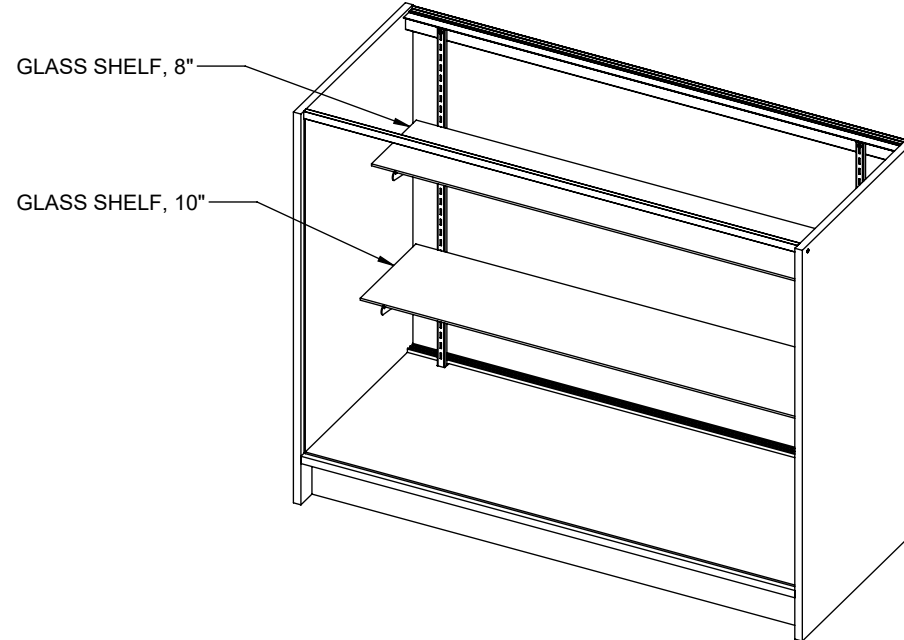


**9**

- PLACE SHELF BRACKET ONTO SLOTTED STANDARD.
- TAP IN WITH SHELF BRACKET WITH RUBBER Mallet.

**9A** INSTALL 10" SHELF ON BOTTOM.

**9B** INSTALL 8" SHELF ON TOP.



## 10

-PLACE TOP GLASS.

-INSERT DOORS BY PUSHING UP,  
THEN DROPPING DOWN ONTO  
PARTS -5 AND -7.

-ASSEMBLY IS COMPLETE.

## SHELF ADJUSTMENT INSTRUCTIONS

-REMOVE DOORS.

-ADJUST SHELF BRACKETS/SHELVES AS NEEDED.

