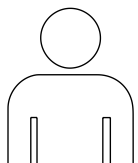
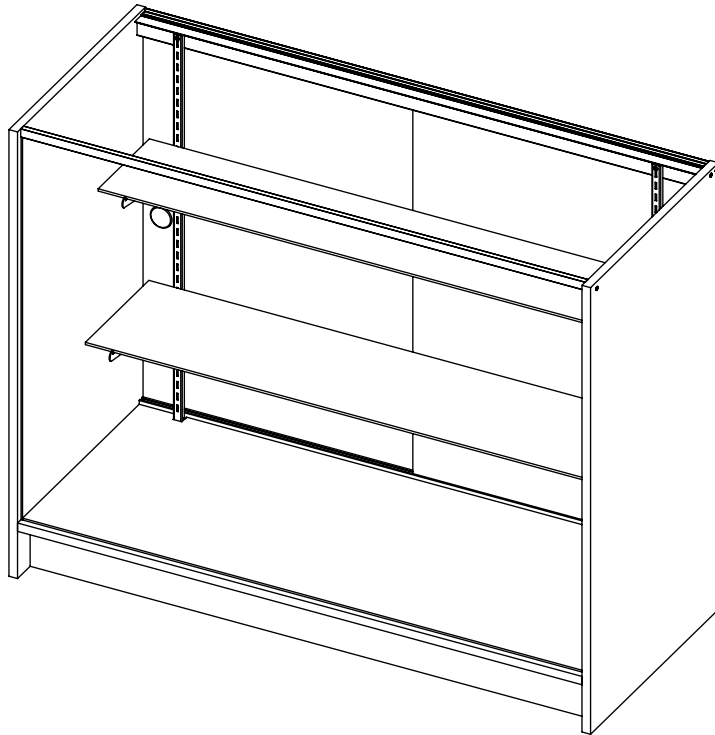


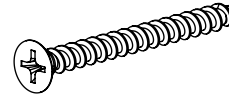
48" LONG EXTRA VISION SHOWCASE UNIT

Item # PW-SC482-W,-MP, -BK

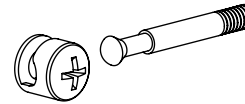


**3 PEOPLE
REQUIRED
FOR
ASSEMBLY**

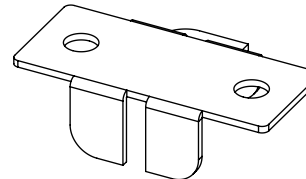
INCLUDED HARDWARE



6X
#6 X 1.5" LONG
FLAT HEAD SCREW



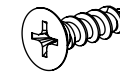
18X
CAM LOCK AND STEM



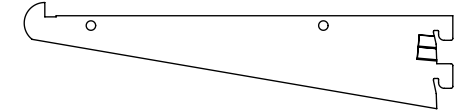
8X
GLKC - SNAP IN SHELF
CENTER REST



6X
STICKER



4X
#8 X 0.625" LONG
FLAT HEAD SCREW



2X GA8 - 8" BRACKET
2X GA10 - 10" BRACKET



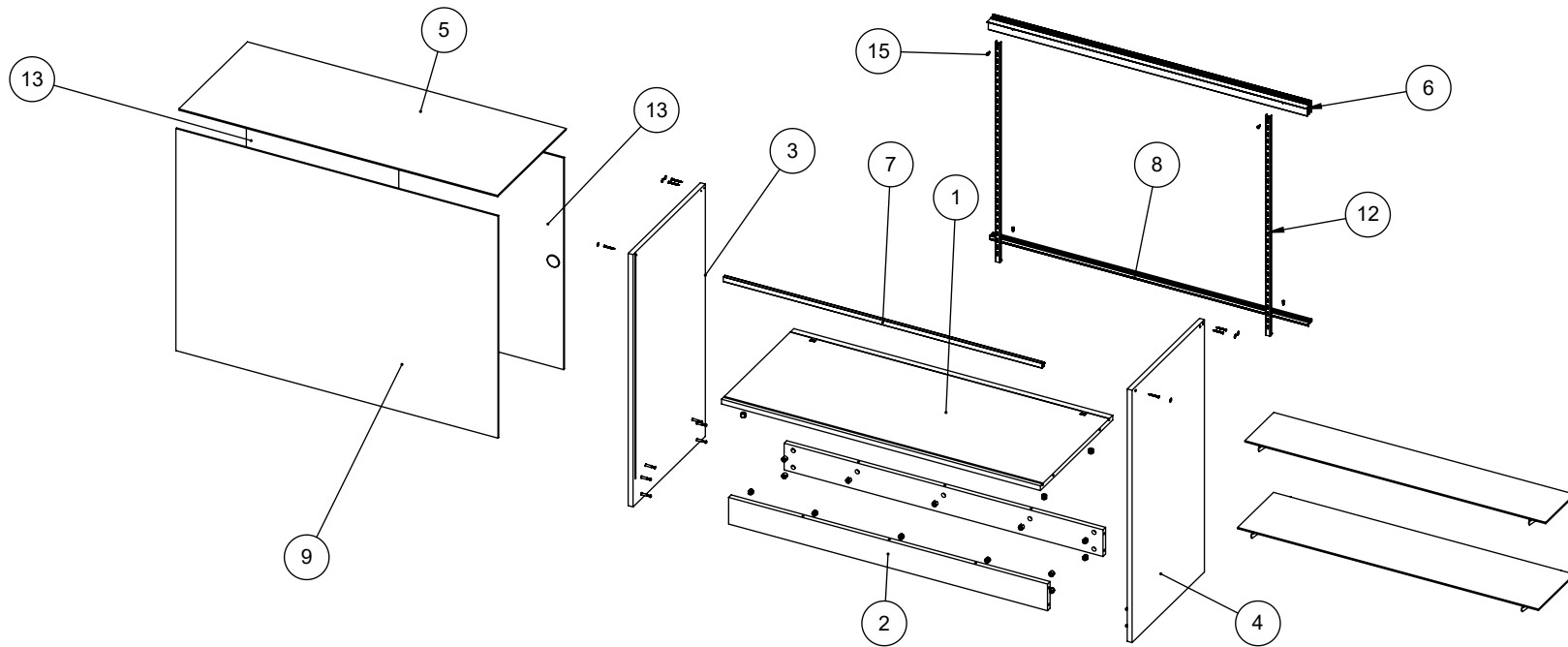
16X
BU - CLEAR RUBBER
BUMPER

TOOLS REQUIRED

SCREWDRIVER
RUBBER Mallet

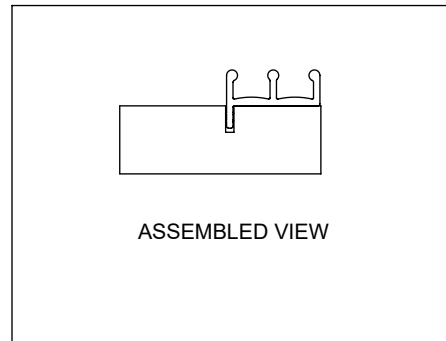
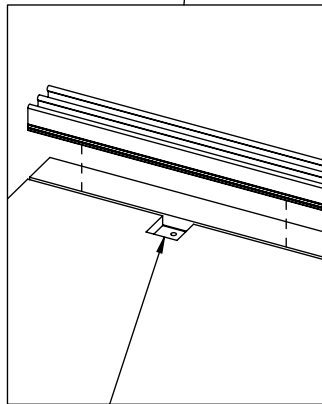
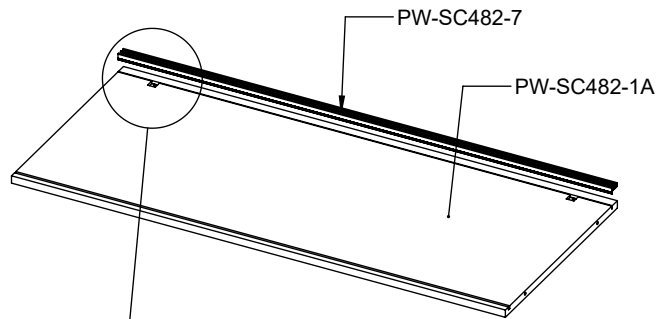
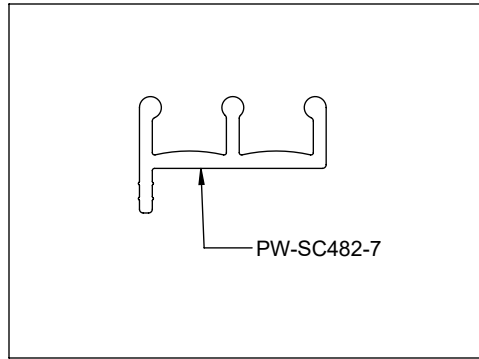
ITEM NO.	PART NUMBER	DESCRIPTION	MATERIAL	QTY.
1	PW-SC482-1A	BASE	MDF	1
2	PW-SC482-1B	TOE KICK	MDF	2
3	PW-SC482-2	SIDE PANEL, LEFT	MDF	1
4	PW-SC482-3	SIDE PANEL, RIGHT	MDF	1
5	PW-SC482-4	GLASS, TOP	GLASS	1
6	PW-SC482-5	EXTRUSION, TOP BACK	ALUMINIUM	1
7	PW-SC482-6	EXTRUSION, TOP FRONT	ALUMINIUM	1
8	PW-SC482-7	EXTRUSION, BOTTOM BACK	ALUMINIUM	1
9	PW-SC482-8	GLASS, FRONT	GLASS	1

ITEM NO.	PART NUMBER	DESCRIPTION	MATERIAL	QTY.
10	PW-SC482-9	GLASS SHELF, 8"	GLASS	1
11	PW-SC482-10	GLASS SHELF, 10"	GLASS	1
12	PW-SC482-11	SLOTTED STANDARD	STEEL	2
13	PW-SC482-12	DOOR	MATERIAL <NOT SPECIFIED>	2
14	#6 FLAT HEAD SCREWS FOR PARTICLEBOARD AND FIBERBOARD	#6 X 1 1/2" LONG FLAT HEAD SCREWS FOR PARTICLEBOARD AND FIBERBOARD	STEEL	6
15	#8 FLAT HEAD SCREW FOR PARTICLEBOARD AND FIBERBOARD	#8 X 5/8" LONG FLAT HEAD WOOD SCREW SCREW	STEEL	4
21	STICKER		STEEL	6

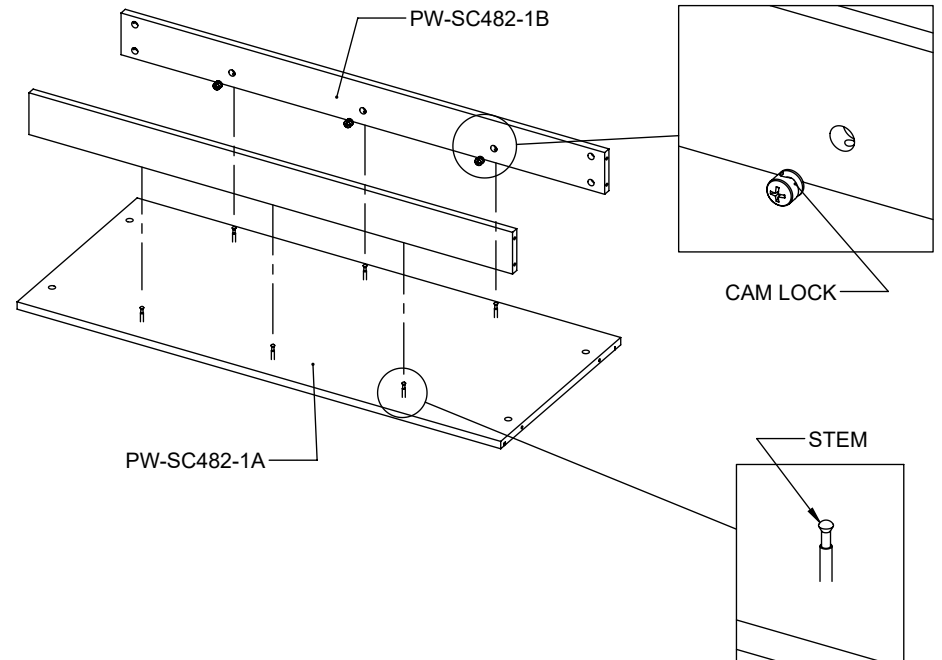
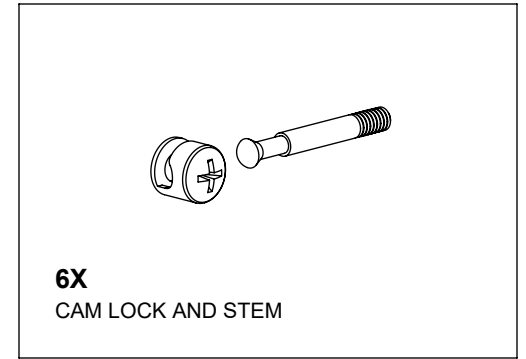


1

-PRESS PART -7 INTO PART -1A.
 -NOTE: MAKE SURE IT GOES
 INTO THE ROUTE ON THE SAME
 SIDE AS THE SQUARE CUTS.

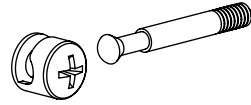


2

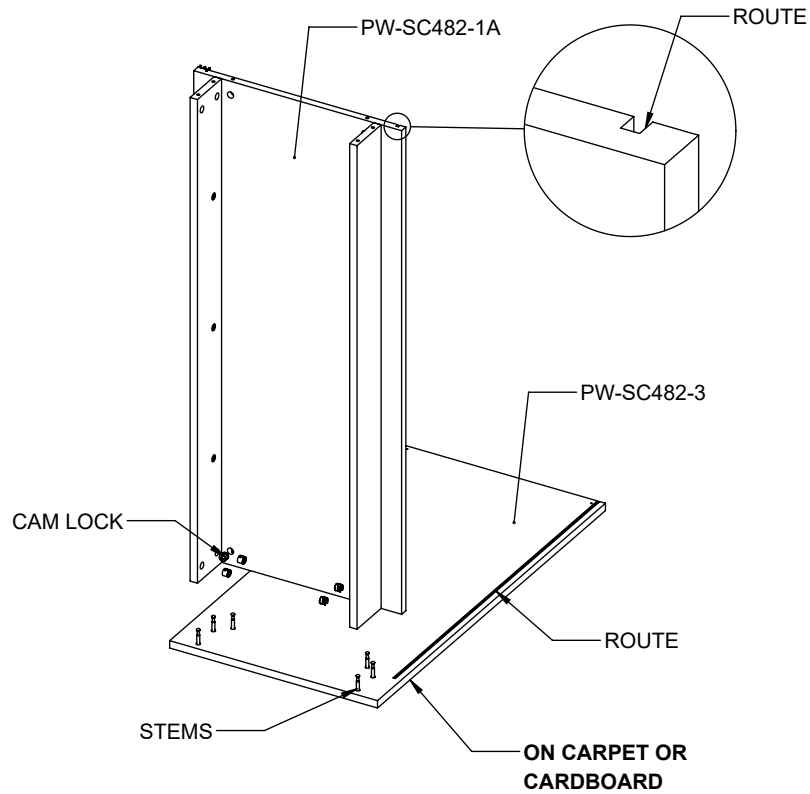


3

NOTE: ALIGN THE ROUTES ON BOTH
PIECES WHEN ASSEMBLING.

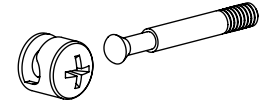


6X
CAM LOCK AND STEM

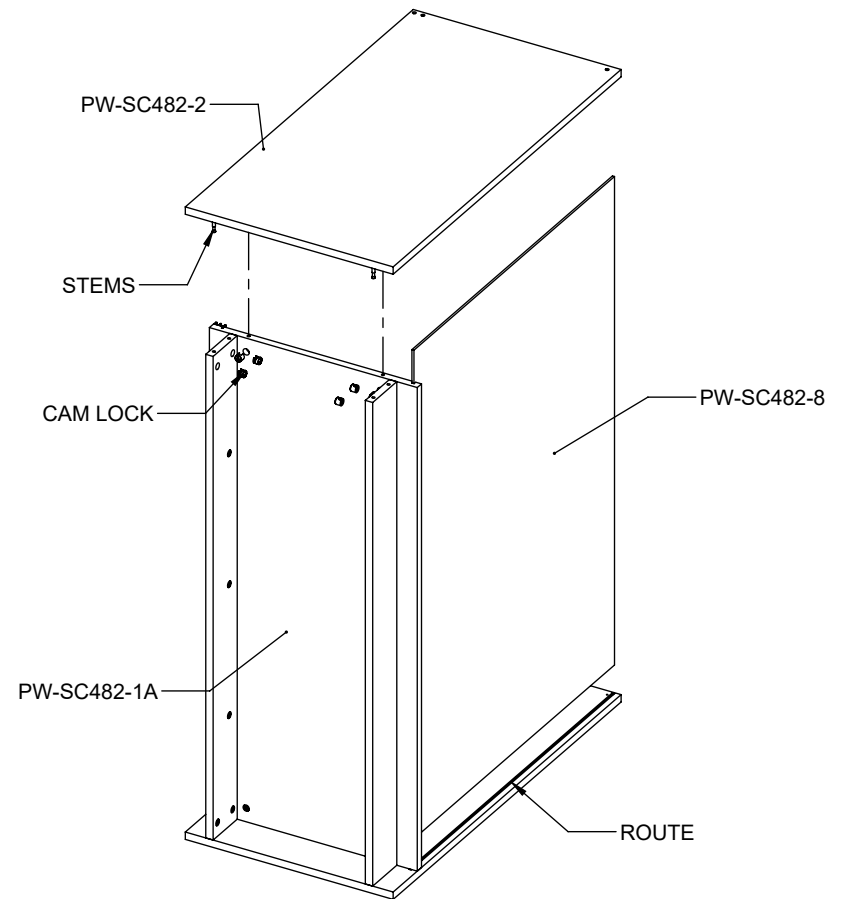


4

-SLIDE IN GLASS FRONT.
-ASSEMBLE PART -2.

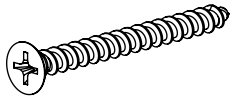


6X
CAM LOCK AND STEM



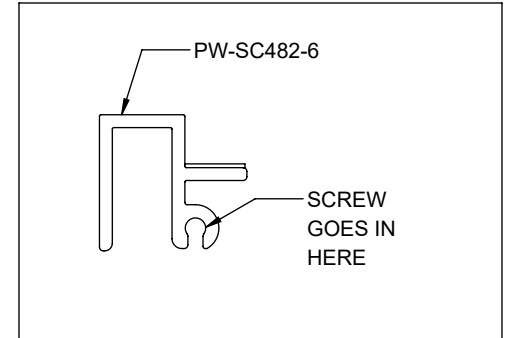
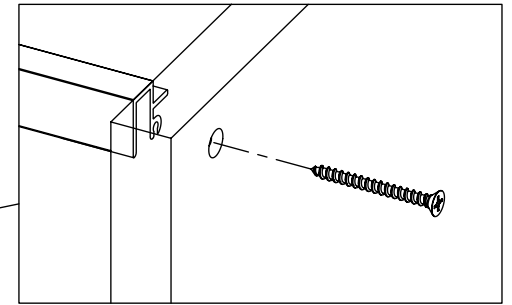
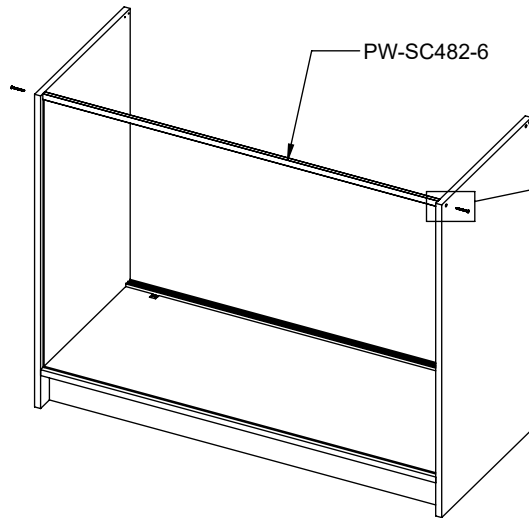
5

- CAREFULLY STAND UNIT UPRIGHT.
- PUT -6 ON TOP OF FRONT GLASS.
- SCREW IN FROM THE SIDES.



2X

#6 X 1.5" LONG
FLAT HEAD SCREW



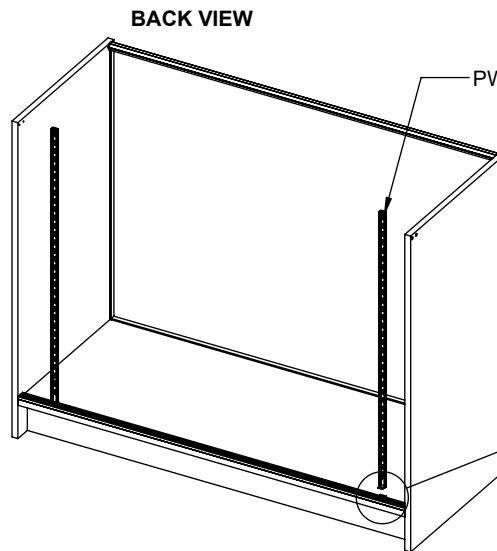
6

NOTE: SQUARE TAB MUST FACE BACKWARDS

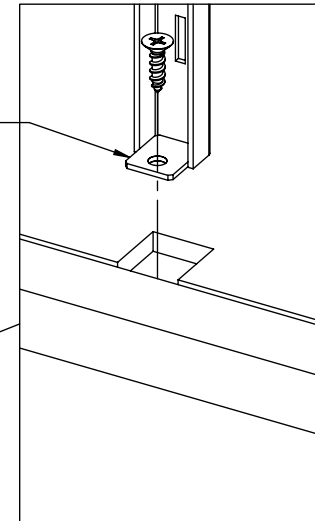


2X

#8 X 0.625" LONG
FLAT HEAD SCREW

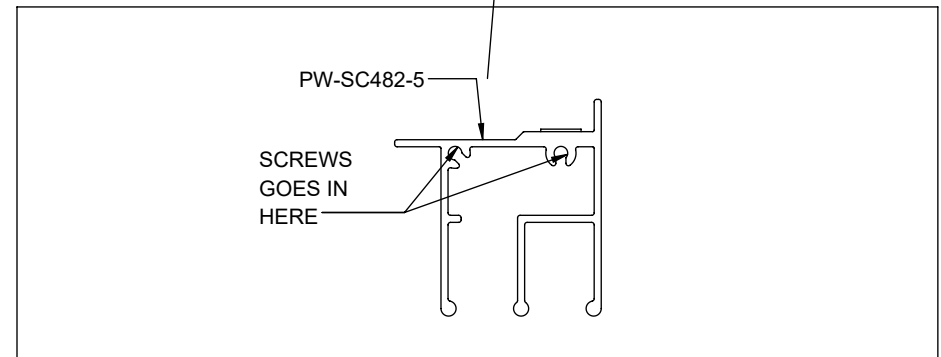
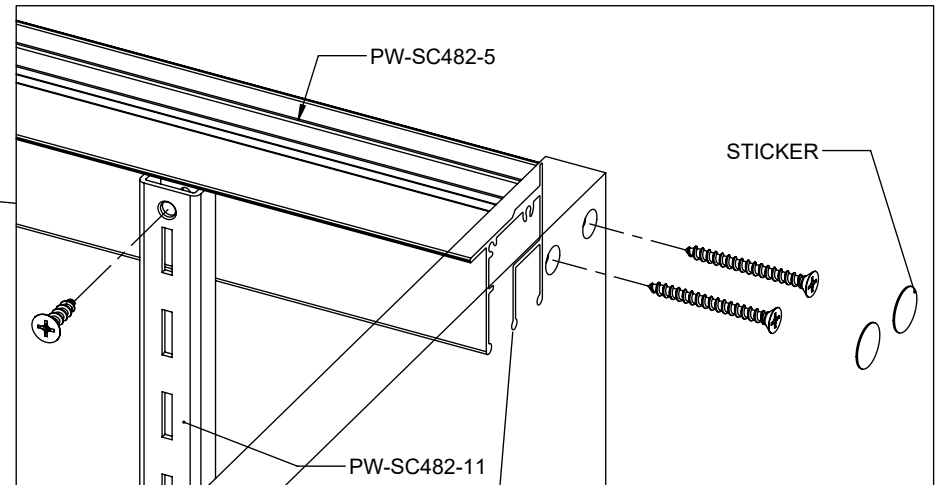
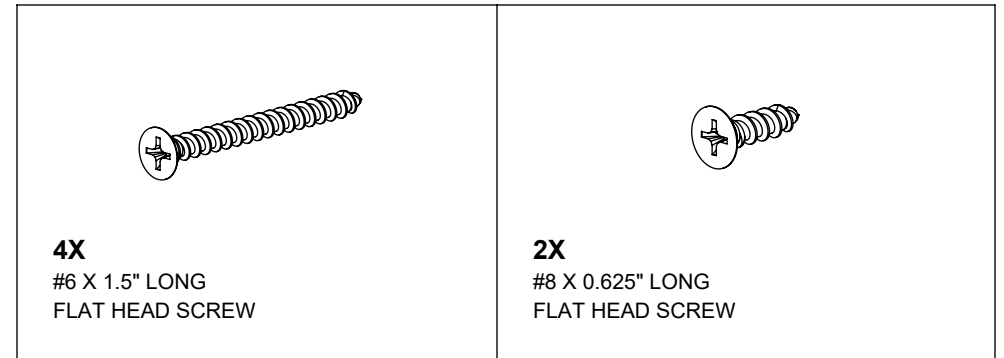
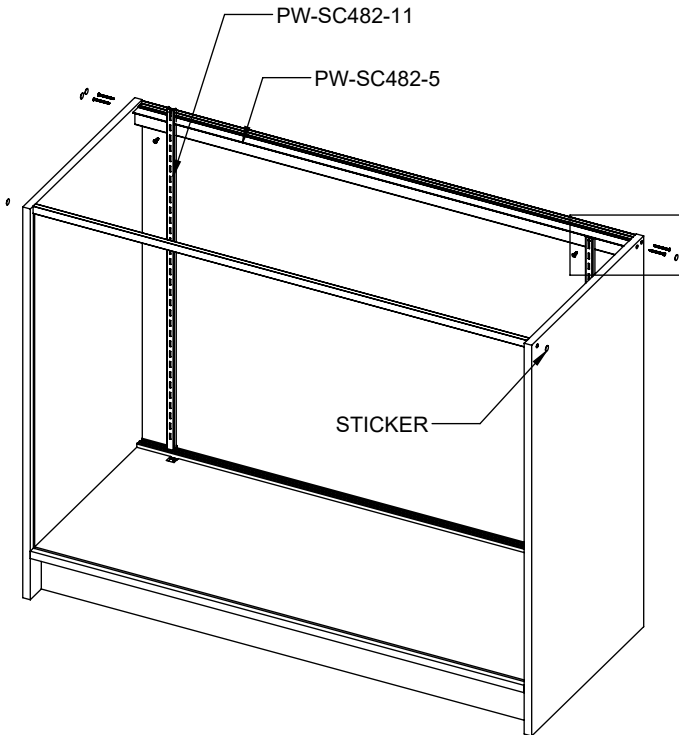


SQUARE TAB



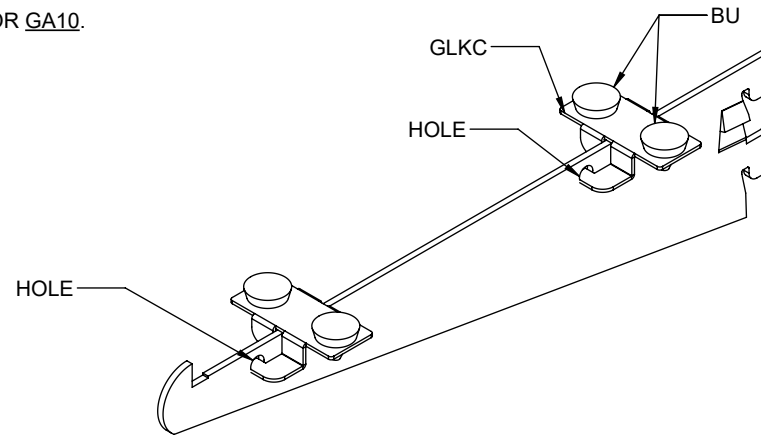
7

- PUT -5 ON TOP OF -11.
- SCREW IN FROM THE SIDES WITH LONG SCREWS.
- SCREW -11 INTO -5 WITH SHORT SCREWS.
- APPLY STICKERS OVER SCREWS ON THE SIDE PANELS.



8

- PUSH BU INTO HOLES ON GLKC.
- ROTATE GLKC ONTO SHELF BRACKETS GA8 OR GA10.

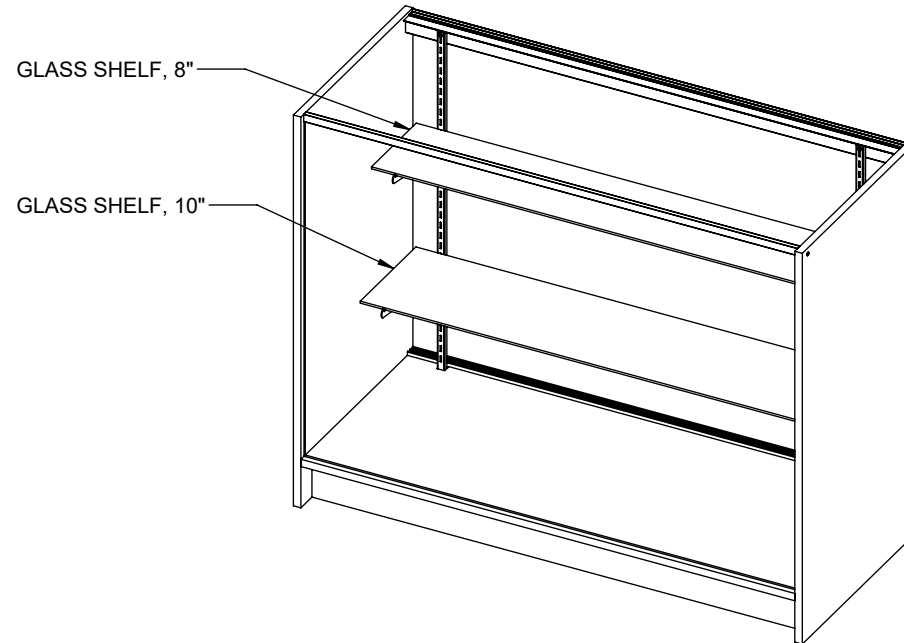


9

- PLACE SHELF BRACKET ONTO SLOTTED STANDARD.
- TAP IN WITH SHELF BRACKET WITH RUBBER Mallet.

9A INSTALL 10" SHELF ON BOTTOM.

9B INSTALL 8" SHELF ON TOP.



10

-PLACE TOP GLASS.

-INSERT DOORS BY PUSHING UP,
THEN DROPPING DOWN ONTO
PARTS -5 AND -7.

-ASSEMBLY IS COMPLETE.

SHELF ADJUSTMENT INSTRUCTIONS

-REMOVE DOORS.

-ADJUST SHELF BRACKETS/SHELVES AS NEEDED.

